

Innovative Modular Solutions for Industry, Office and Home



**MANIK**  
ENGINEERING PVT. LTD.

Interior Solutions  
Customizing Volumes





## ABOUT US

We, Manik Engineering Pvt. Ltd., a leading manufacturer since 1973. We supply high-quality products for the Industrial sectors, Offices and Home. Our modern 35,000 sq. ft. facility in Navi Mumbai is equipped with advanced technology, and we are committed to excellence and customer satisfaction.

## LEADERSHIP

Mr. Kishin Manik, our Managing Director, brings 50 years of unmatched expertise to Manik Engineering Pvt. Ltd. His visionary leadership, blending traditional methods with cutting-edge advancements, has been key to the company's growth and success.

## MISSION

Our mission is to leverage our decades of experience and expertise to design, manufacture, and deliver top-notch products that exceed customer expectations in terms of quality, reliability, and performance.

## VISION

Our vision is to be a globally recognized and respected leader in manufacturing high-quality interior products for the Industrial sectors, Offices and Home.

## QUALITY POLICY

"Committed to Consistent Excellence, Precision, Sustainability, and Customer Satisfaction."

## AWARDS & ACCOLADES



2 Star Export House  
Certified by Gov Of India



ISO 9000:2015  
Certified



Patented  
Technologies

## WHY CHOOSE US?

- ❖ In today's fast-paced office environments, efficient design and quick installation are crucial for office partitions.
- ❖ Traditional partition methods are often slow, inflexible, and disruptive, leading to delays and interruptions in your workflow.
- ❖ They are also challenging to modify or relocate, making it difficult to adapt to changing needs.
- ❖ Space constraints further complicate traditional partitions, making them costly and inefficient to adjust.
- ❖ To overcome these challenges, it's essential to explore faster, more adaptable modular partition designs.
- ❖ These innovative solutions can save time and resources, keeping your office agile and responsive to evolving requirements.
- ❖ Now, you've found the perfect partner for all your office partition needs  
— @ Manik Engineering Pvt. Ltd.
- ❖ Approximately 80 to 90% of the constituent materials are designed for reuse, making the process both sustainable and eco-friendly.

"OUR TECHNOLOGY MAKES IT EASY TO ...

**RELOCATE  
CONFIGURE  
PAIR**

... ANY TIME."

# ModulArt – INPLANT OFFICES



Creating a productive and comfortable office environment is essential for any business.

## MATERIALS & BUILD QUALITY

### Exterior: Metal Panels

- ✓ High Quality – Powder Coated
- ✓ Fire Retardant
- ✓ Impact Protection
- ✓ Easy Maintenance

### Interior: Glass/ Wooden Partitions

- ✓ Acoustic Partitions
- ✓ Elegant & Aesthetic Finish
- ✓ Single & Double glass Partitions
- ✓ Half & Full Glass Partitions



MEPL Factory @ Kopar Khairne, Navi Mumbai | 2022



Conference, MEPL Factory @ Kopar Khairne, Navi Mumbai | 2022

# INPLANT PROJECTS

## FORD MOTORS

Acoustic Enclosure for Blanking Line designed with structure and roofing  
**Year: 2008 | Location: Chennai**



We have Successfully completed a project involving the enclosure of a blanking machine, significantly improving safety and noise reduction in the production area. The enclosure not only minimizes the risk of accidents by providing a protective barrier but also substantially reduces noise levels, creating a more comfortable and productive environment for workers. This enhancement helps maintain machinery efficiency while ensuring compliance with industry safety standards, ultimately contributing to better operational performance.

## ESMECH EQUIPMENT PVT LTD

Inplant Office for technical staff & Management Team  
**Year: 2008 | Location: Chennai**



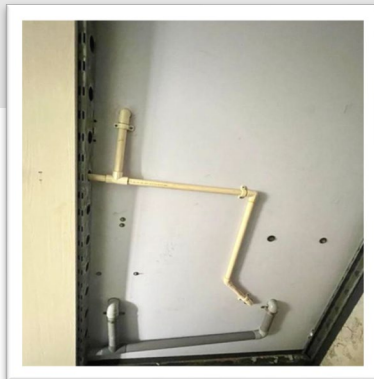
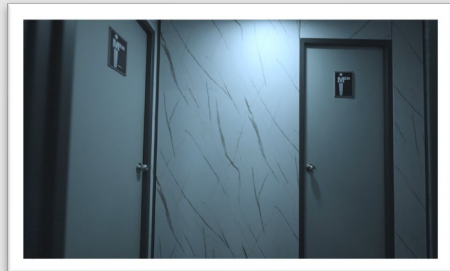
We have Successfully completed a project involving the enclosure of a blanking machine, significantly improving safety and noise reduction in the production area. The enclosure not only minimizes the risk of accidents by providing a protective barrier but also substantially reduces noise levels, creating a more comfortable and productive environment for workers. This enhancement helps maintain machinery efficiency while ensuring compliance with industry safety standards, ultimately contributing to better operational performance.



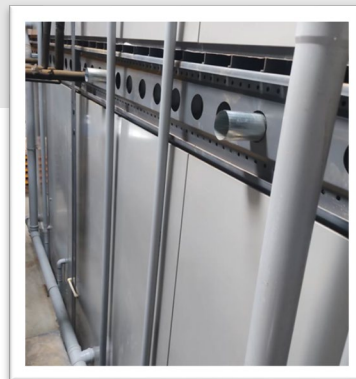
Accessories like tables, kitchen tops, glass shelves, overhead cabinets & for making versatile workstation partitions as well can be mounted on load bearing walls.

Installed utilities, including AC, smoke detectors, and sprinklers seamlessly integrated into the system.

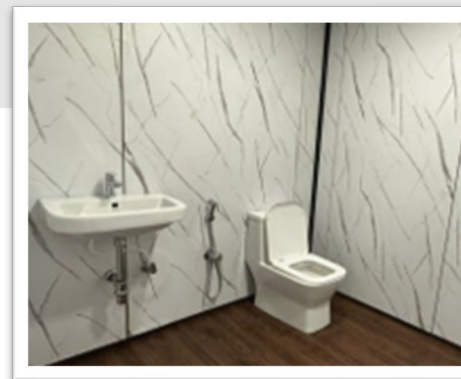
## ModulArt – INPLANT WASHROOMS



Concealed within partition wall gaps



Integration of Pipes & Fixtures for the water connection & sewage line



With High Quality Italian Fittings

### ADVANTAGES

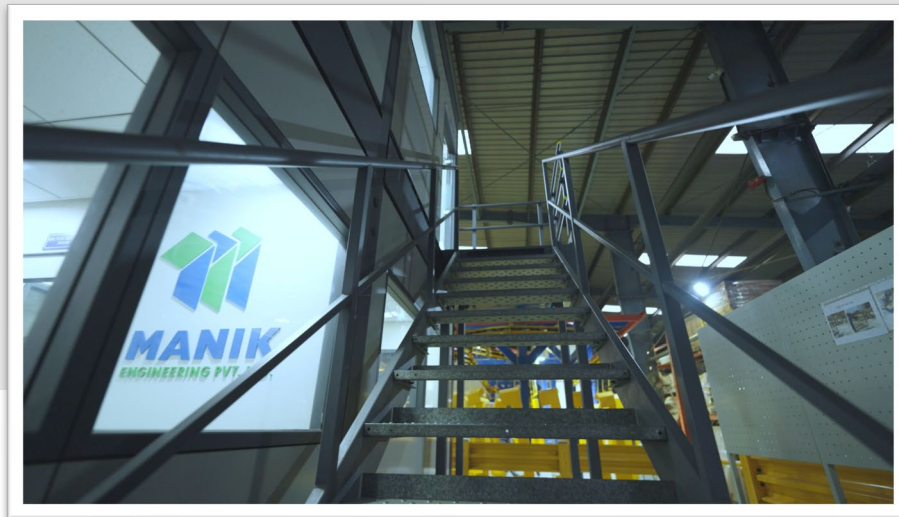
- ✓ No Mess Installation
- ✓ Modular Design
- ✓ Quick Installation
- ✓ Sustainability
- ✓ Easy Maintenance
- ✓ Flexibility

### FEATURES

- ✓ Integration of water and sewage connections

### APPLICATION

Factories, Warehouses, Commercial Offices.



MEPL Factory @ Kopar Khairne, Navi Mumbai | 2022



Esmech Equipment Pvt Ltd @ Bhiwandi, Thane | 2008



Esmech Equipment Pvt Ltd @ Bhiwandi, Thane | 2008

## FEATURES

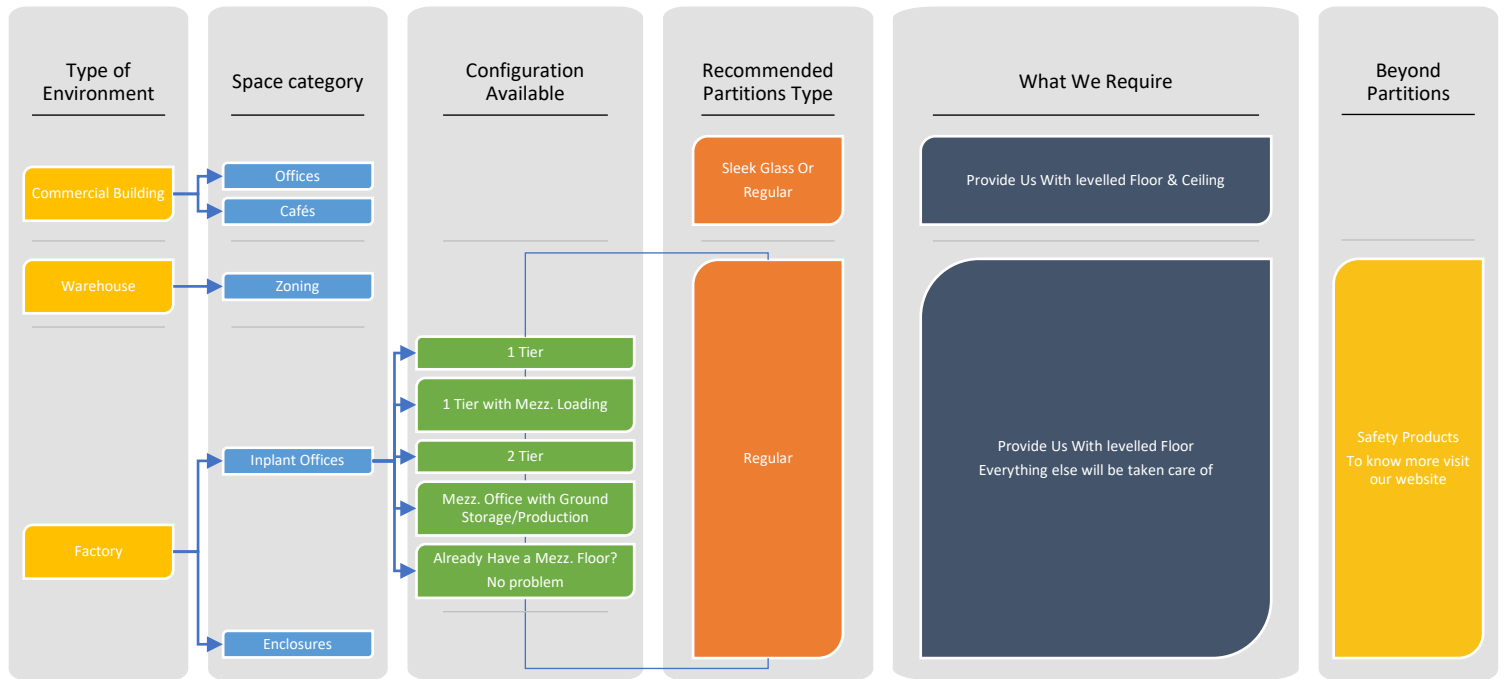
- ✓ **Space Optimization:** Maximize vertical space, adding usable square footage without costly building expansions.
- ✓ **Ease Assembly:** Offers excellent interchangeability in terms of relocating it in the future.
- ✓ **Modularity & Upgradeability:** Enables easy expansion in the future without the need for welding at the site.
- ✓ **Aesthetics:** Powder-coated components make the system aesthetically appealing.

## APPLICATION

Factories, Warehouses, Commercial Offices.



### SELECTION GUIDE



\* (Outside Panels : Inside Panels) | M – Metal Panels | W – Wooden Panels

We Recommend to Include Toilets for Inplant and Factory Requirements.

### OUR INSTALLATION PROCESS - Partitions

- Once the flooring and ceiling are ready, our work begins.
- **1000 sq ft.** of partitioning can be realized / executed per team in one shift under ideal conditions.
- The team is split in 2 groups – The first group goes on fixing the frames structure and the second group fixes the panels.
- For project with large area installation is carried out by Zoning System. Our teams go on completing zone after zone as per client's priorities.

### Guidance In Selecting Building Systems

We offer assistance in selecting the right **HVAC SYSTEMS, WORKSTATIONS, FIREFIGHTING SOLUTIONS & FALSE CEILINGS** for your space. Our experts work closely with you to understand your specific needs and preferences, ensuring that every choice enhances both the functionality and safety of your environment. With our support, you can confidently make decisions that align with your goals and optimize the performance of your workspace.

#### VERSATILITY

Maniks' ModulArt Partitioning System is highly versatile for accommodating every possible conceivable office inputs such as: *Perimeter Walls, AC Grills & Ducting, Venetian Blinds, Columns Cladding, Shelving, Desking and Storage.*

### Interior Designs & Office Partition Layout



We specialize in crafting interior designs and office partitions that are fully customizable to suit your unique preferences and requirements. Whether you're looking to optimize space, enhance functionality, or reflect your brand's identity, our tailored solutions ensure that every element is designed with your vision in mind. Our commitment to flexibility and attention to detail guarantees that you receive a personalized environment that not only meets but exceeds your expectations.





*"Our innovative design is PATENTED, ensuring unique solutions and unmatched quality for your industrial needs."*



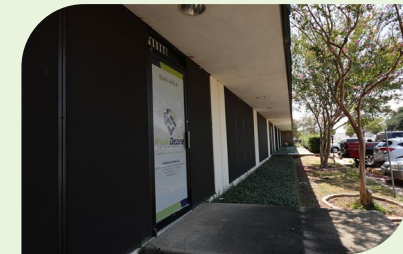
**MANUFACTURING FACILITY IN INDIA**

### **GLOBAL PRESENCE**

A sister Company "Intellidezine" in USA

**Office & Warehouse**

**Address:** 15760, W Hardy Road, Suite 440-A,  
Houston TX 77060



### **Corporate Office**

1 Grnd & Mezz. Floor, Lakhi Industry  
House, LBS Marg, Bhandup (West),  
Mumbai - 400078

### **Contact Us**

Email: [sales@manikindia.com](mailto:sales@manikindia.com)

Call Us On: +91 84240 40899

Website: [www.manikindia.com](http://www.manikindia.com)



**LINKEDIN**

### **Factory**

Plot No. 805, TTC Industrial Area,  
Kopar Khairane MIDC,  
Navi-Mumbai - 400710